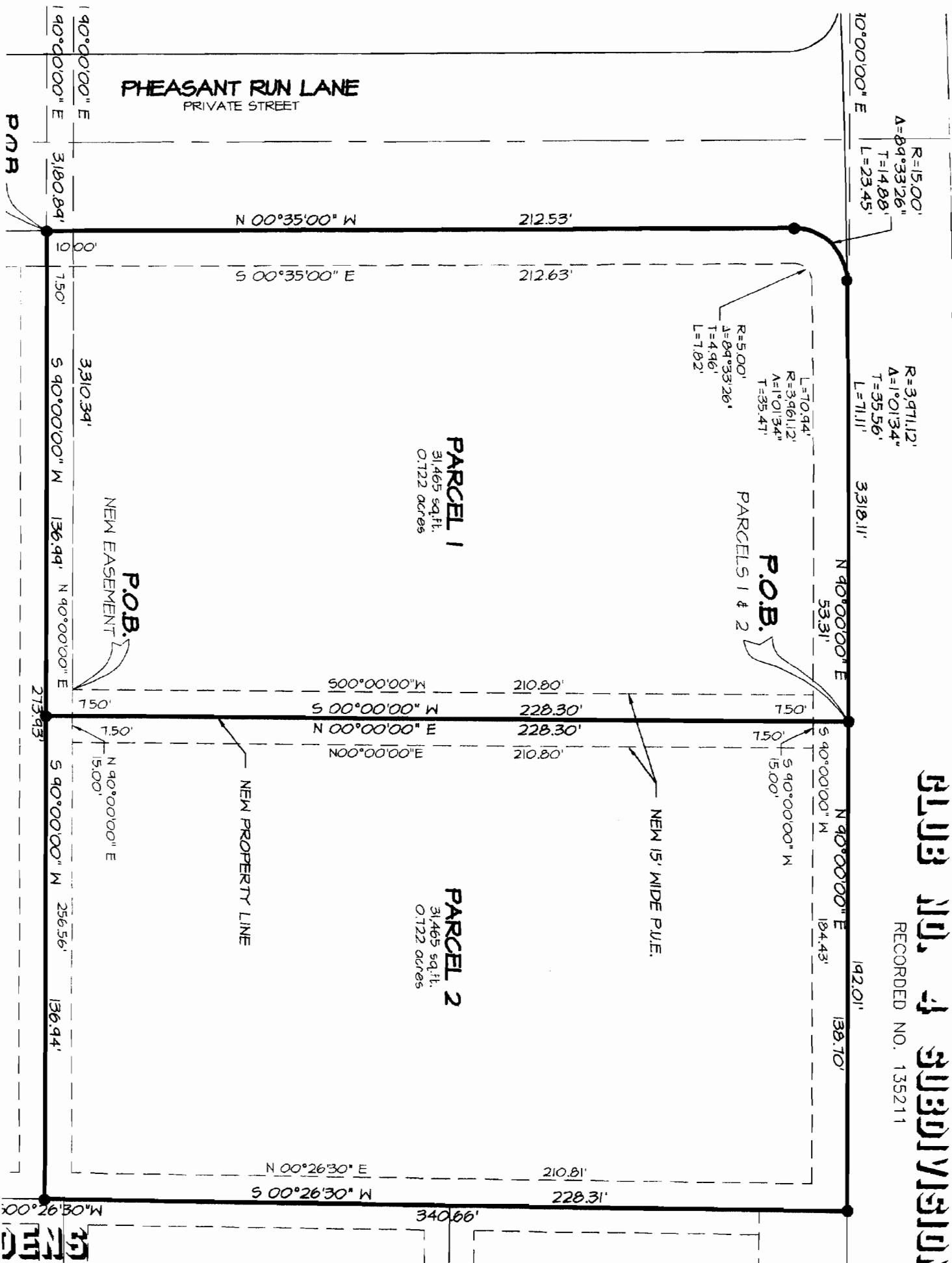


BLOOMINGTON DRIVE
60' WIDE PUBLIC STREET

BLOOMINGTON COUNTY PLUB NO. 4 SUBDIVISION

RECORDED NO. 135211



PARCEL 1
31,465 sq.ft.
0.722 acres

PARCEL 2
31,465 sq.ft.
0.722 acres

P.O.B.
PARCELS 1 & 2

P.O.B.
NEW EASEMENT

NEW PROPERTY LINE

NEW 15' WIDE P.U.E.

PHEASANT RUN LANE
PRIVATE STREET

BLOOMINGTON DRIVE
60' WIDE PUBLIC STREET

D.E.N.G.